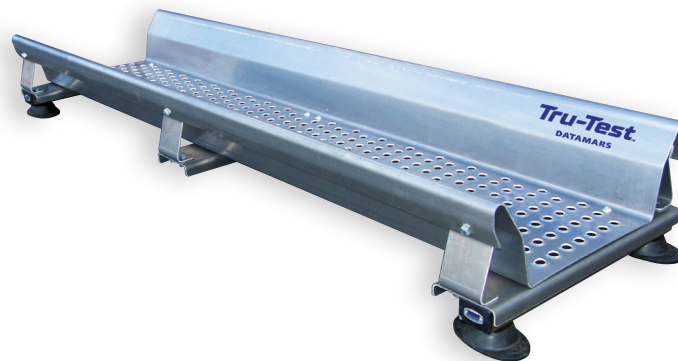


# 2.2 m Cattle Platform



## Rugged, light, accurate and safe.

### PROTECT YOUR ANIMALS WHILST CAPTURING ACCURATE WEIGHTS.

An innovative design combines the rugged strength of a rigid, one-piece platform with the benefit of a complete weld free construction for durability.

The unique design also incorporates a folded outside edge and low profile bolts on the walking surface to help eliminate hoof damage while weighing.

Its lightweight design makes it easy to set up and relocate.

Ideal for weighing in a race.

- ✓ **Rugged.** Lightweight aluminium design, stainless steel, rust proof bolts (no welded joints) reduces the chance of breaking.
- ✓ **Fast installation and relocation.** Simply place the platform on a flat surface. A rope handle makes it easy for one person to carry.
- ✓ **Accurate.** Weld free folded design means the one piece platform is strong and stiff along the length, helping the collection of accurate weights. Platforms that flex will under-weigh or over-weigh and will cause zero-return problems.
- ✓ **Safe.** Unique non-slip surface and low profile bolts ensures animal safety and comfort. Angled platform sides centre animals.

## FEATURES AND SPECIFICATIONS

- ✓ **Easy cleaning.**  
Holes in the surface of the platform prevent manure build up and make cleaning easy.
- ✓ **Flexible.**  
Designed to fit all Tru-Test 600 mm load bars.  
Ideal for permanent and temporary installations.
- ✓ **Length.**  
2.2 m
- ✓ **Width.**  
610 mm
- ✓ **Walking surface.**  
Width 390 mm, height 100 mm
- ✓ **Side height.**  
190 mm (from walking surface)
- ✓ **Weight.**  
29 kg

### Order Information

Aluminium Cattle Platform 2.2 m

Part No: 880 0000-081

Although the information presented in this Product Information Sheet is believed to be accurate and reliable, no responsibility for inaccuracies can be assumed by Datamars Limited. Performance data is typical only and variations due to component manufacturing tolerances are normal. Datamars Limited reserves the right at any time to change performance characteristics or specifications without prior notice. All trademarks with an \* are not owned by Datamars and belong to their respective owners.

The Bluetooth® word mark and logos are owned by Bluetooth SIG, Inc. and any use of such marks by Datamars Limited is under licence. © Datamars Limited - All rights reserved.

814006 Issue5 09/20

**How are you tracking?**

Let's talk.

**0800 263 278 (NZ)**

**1800 641 324 (AU)**

**[www.tru-test.com](http://www.tru-test.com)**